

Vita Pure Kitchen Mixer



EN Installation Instructions

Notes prior to installation

1. Inspect all parts prior to installation for suitability and/ or defects.
2. Any suspected defect should be reported as soon as possible.
3. Should any product be installed despite a fault having been found and reported, argent will not accept liability for the cost of labour to remove and install any replacement product/s.
4. This product complies with the requirement of Lead-Free standards as defined in the National Construction Code Volume 3 and is suitable for use as part of Lead-Free installation.

Notes for installation

1. Please ensure pipework is clear of debris by flushing lines prior to installation.
2. We recommend hot and cold water isolation stops are used - not included in supply.



Pressure and temperature requirements

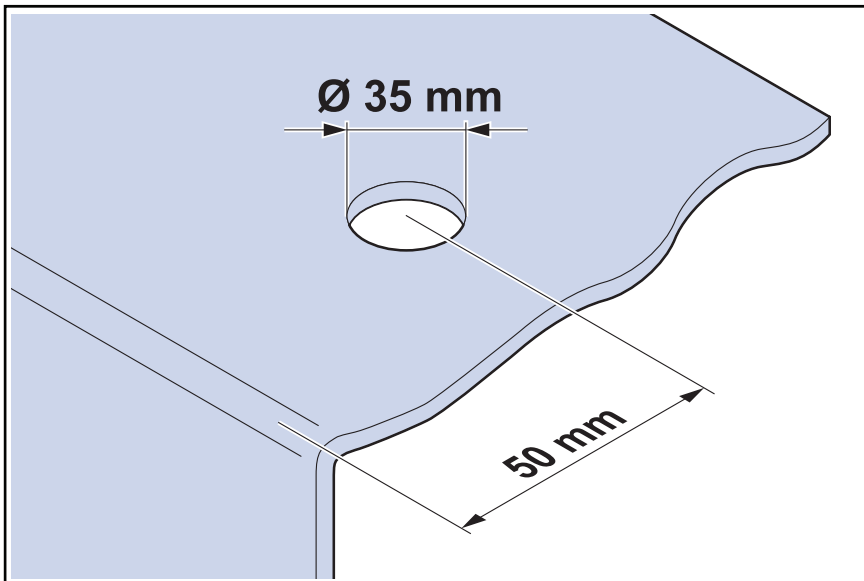
1. Inlet pressure range 100 - 500 kPa.
2. Maximum hot water temperature 60 °C.
3. AS/NZS 3500 requires 500 kPa maximum operating pressure at any outlet within a building.
4. Hot & Cold inlets should have equalised water pressures.

Notes to the installer

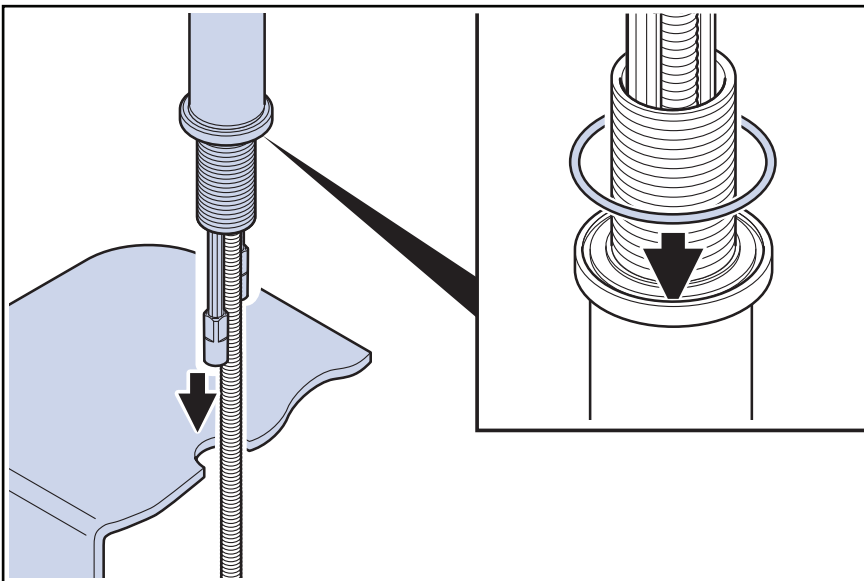
- Twisting or stretching the flexible hoses during installation may result in failure, and will void the warranty.
- Avoid severe bends in the flexible hoses as this may result in failure and will void the warranty.

Cleaning and maintenance

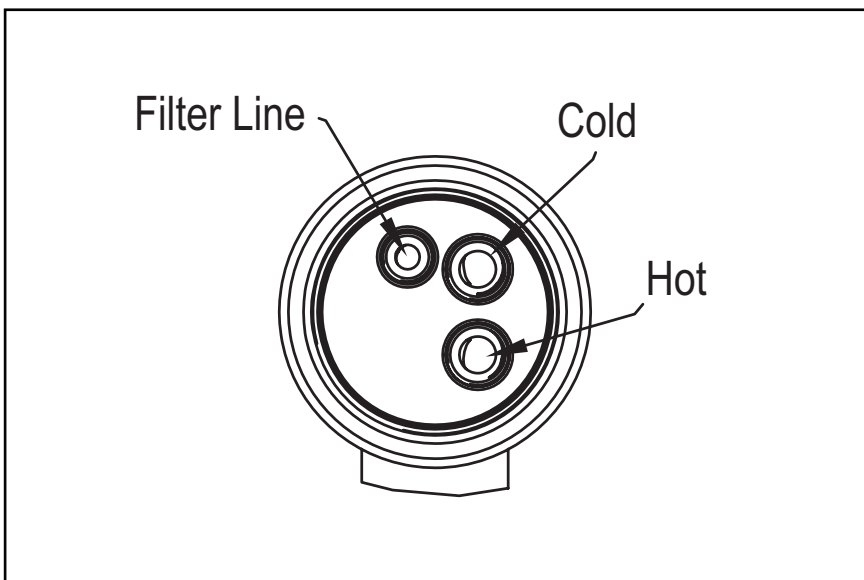
- Use a soft cloth (e.g. microfiber) with warm water or a mild liquid soap and water to wipe the surface clean. Immediately wipe dry with a soft cloth. Do not use undue pressure when wiping.
- Never use harsh chemical detergents, solvents or acidic cleaners, limescale remover, household vinegar or abrasive cleaning agents for cleaning.
- Never use abrasive cloths, sponges and scouring pads, as they may scratch or damage the finish.
- Personal hygiene products (e.g. toothpaste, shampoo, shower gel, etc.) can damage the finish of your product and should be cleaned off immediately.



Where the mixer is going into a stone or laminate top, cut a Ø35mm hole.



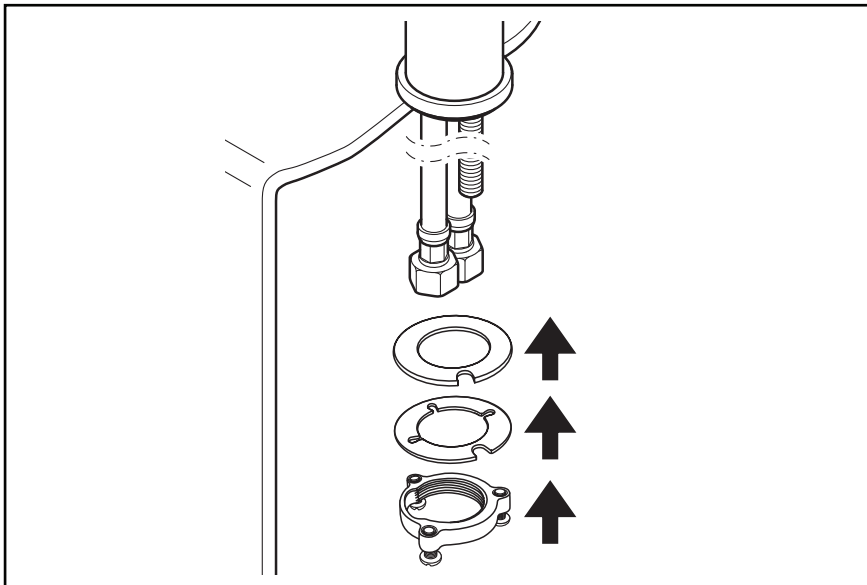
Ensure that the rubber ring is placed between the tap body and sink.



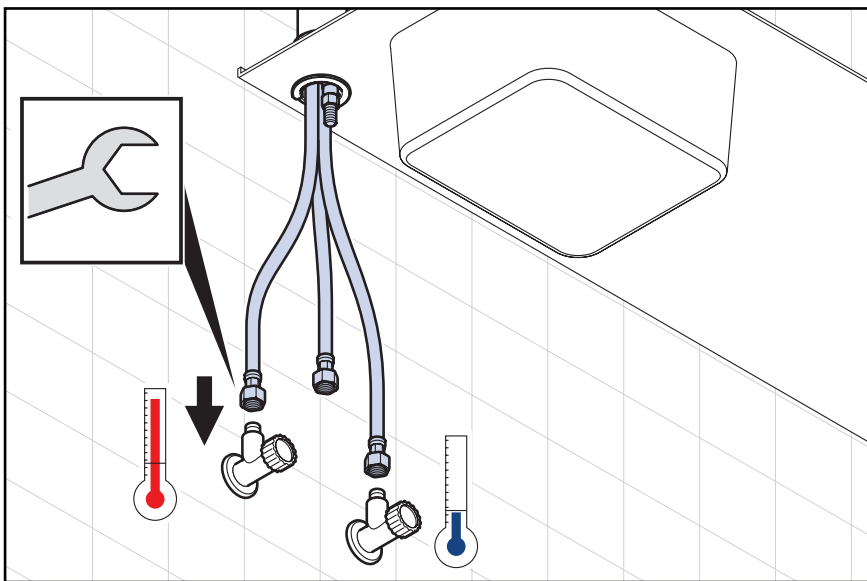
Holding the mixer above the sink where it will be installed, feed the uninstalled tails (3) from the bottom of the sink and attach to the mixer.

- a. Blue = Cold
- b. Red = Hot
- c. Unmarked = Filter Line

Hand tighten the tails, ensuring o'ring has fully entered the sealing bore to provide water tight joint.



Fit the rubber gasket and fixing plate into position under the sink, fasten with supplied fixing.



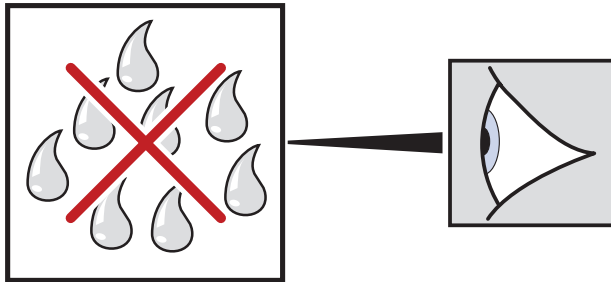
Connect the hot hose (Red) to the hot water supply.

Do not connect the cold hose (Blue) yet.

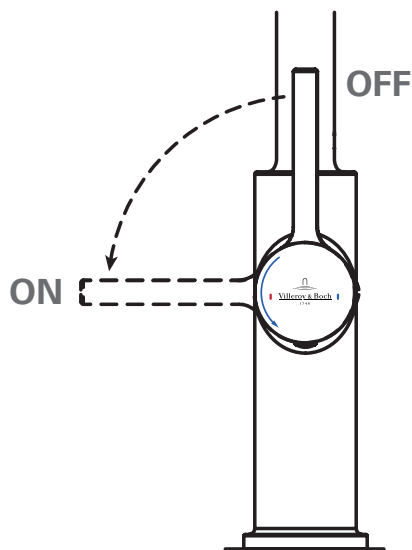


Install the in line water filtration system by following the instructions provided with the filter kit.

This includes connection of the cold hose (Blue) and filter T piece.

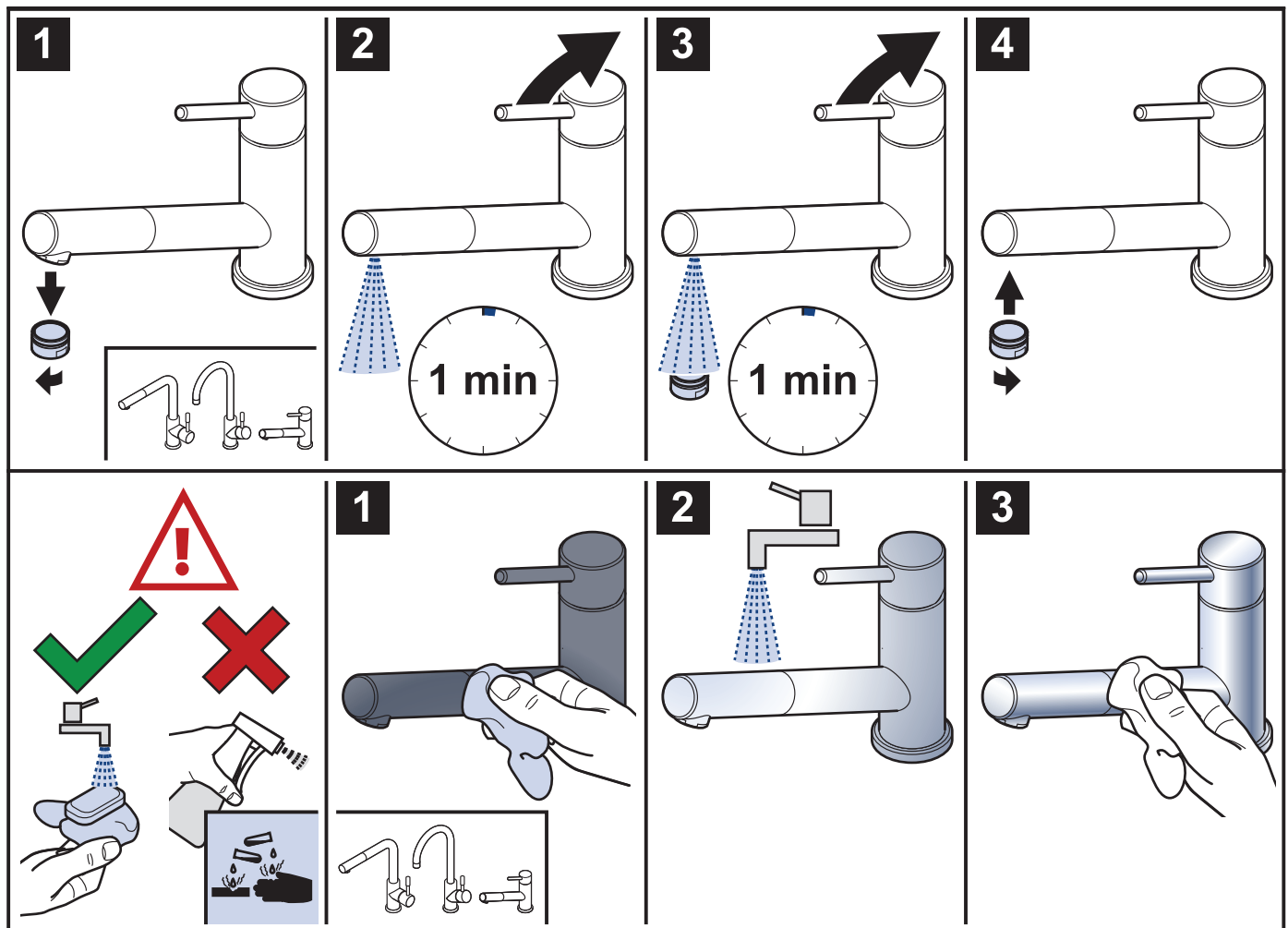


Open the stop valves, flush the lines, then close the mixer lever and check there are no leakages.



Without pulling the lever away from the mixer, pull it forward, this activates the filter function.

*Use filter manufacturers recommendation for frequency of cartridge replacement.





Argent Australia
L1/22 Arthur Street, Fortitude Valley QLD 4006
1300 364 748
www.argentaust.com.au



Villeroy & Boch AG
Postfach 12 30-66689 Mettlach, Germany
Tel: +49 (0) 6864816000
www.villeroy-boch.com

Please Direct any feedback for this product to Customer Central:
support@customer-central.com.au or call 1300 364 748

The manufacturer reserves the right to make alterations without notice.