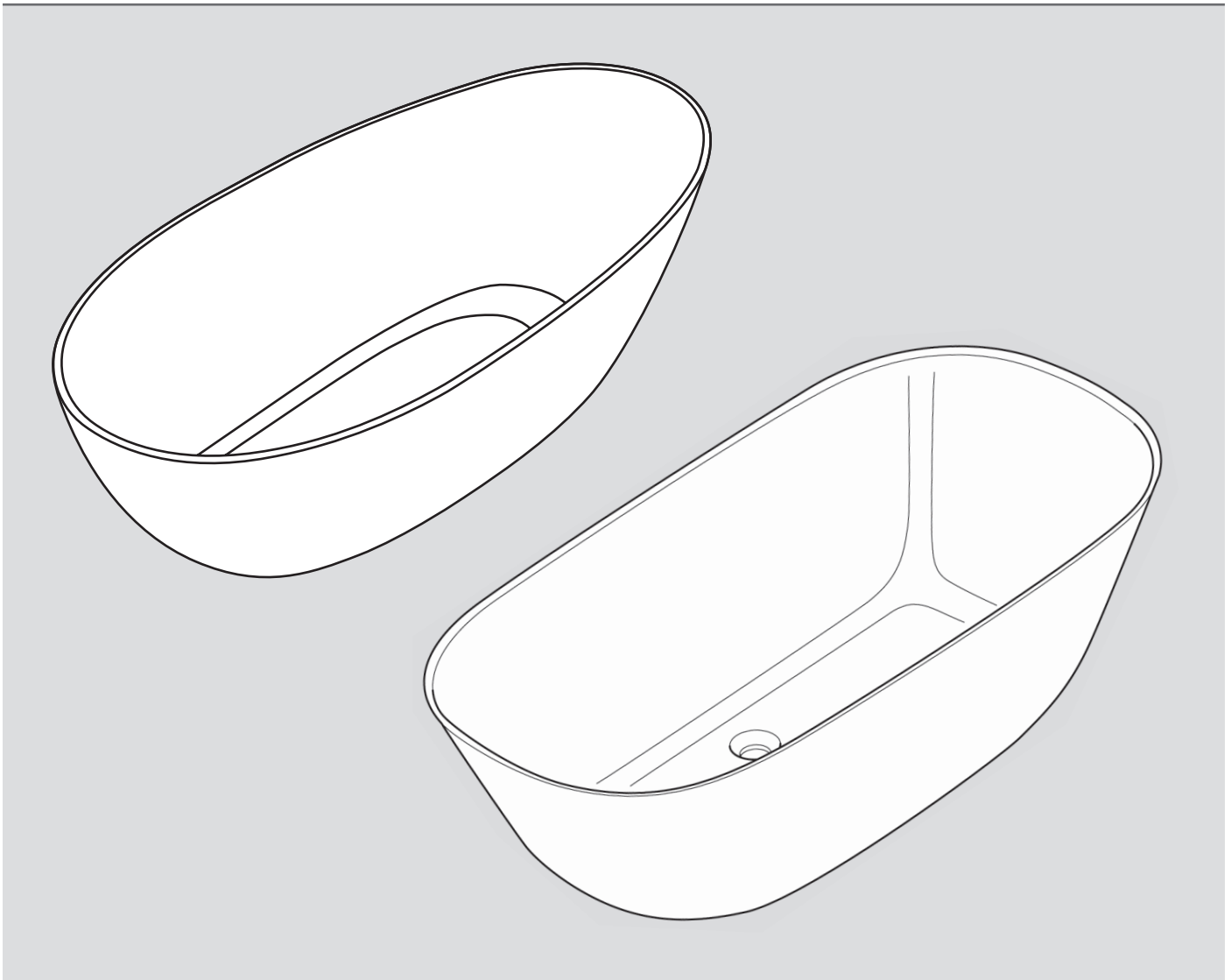


Antao - Theano



EN Installation Instructions



IMPORTANT

These baths have special installation requirements for waterproofing and waste connection that vary depending on installation. Please ensure that instructions are reviewed prior to installation. It is highly recommended to liaise with certifiers and local authorities to ensure compliance.

1 General Data

Read the installation and operating instructions carefully before installing and using the unit. The installation and operating instructions should always be kept in a location that is easily accessible by the user.

Check the products for damage and completeness before installation. Any apparent faults can no longer be rectified after installation has taken place.

1.1 Conventions Used

Safety Instructions



Warning!

Warning of potential danger.
Severe bodily injury or death is possible.



Caution!

Warning of potential dangerous situations.
Slight bodily injury or material damage is possible.



Important

Other useful information for application instructions.

Action Instructions

Steps to be carried out are shown as a numbered list. The sequence of the steps must be complied with.

Example:

1. Action step
2. Action step

The results of an action instruction are shown as follows:

Example:

- Action step
- Action step

Lists

Lists without a fixed chronological sequence are shown as sets of bullet points.

Example:

- Item 1
- Item 2

1.2 General Data

The target groups of these installation and operating instructions are installers, plumbers and users.

Installers:

Under authorisation by the user, these experts carry out work for which they have the necessary expertise, gained from a professional education or comparable practical training, in order to be able to carry out the work which is encountered in an expert and appropriate manner with regard to safety and risk. Their work is governed by the instruction, checking and responsibility of trained supervisory/expert personnel appointed by the user.

Plumbers:

These experts are, on account of their technical training, knowledge and experience, as well as their knowledge of the applicable standards and stipulations, capable of carrying out work on plumbing installations and of detecting and avoiding possible dangers independently. The plumbers are trained specially for the site where they are active, and they are familiar with the relevant standards and stipulations.

Users:

This appliance can be used by children aged from 8 years and above and persons with reduced physical, sensory or mental capabilities or lack of experience and knowledge if they have been given supervision or instruction concerning use of the appliance in a safe way and way and understand the hazards involved. Children shall not play with the appliance.



Warning!

Cleaning and user maintenance shall not be made by children without supervision.



Important

The bathtub must not be used by very young children (0-3 years) and not be used by young children (3-8 years) without continuous supervision.

1.3 Guarantee

We provide a 10 year factory guarantee from the date of acquisition on this quality product.

The guarantee covers: factory faults, colour variations and/or cracking as a result of material fatigue and deformation caused by hot water. The guarantee is restricted to the repair or replacement of the Villeroy & Boch products delivered.

The guarantee is only applicable if the product has been installed and serviced in accordance with our installation and servicing instructions. It becomes invalid as soon as holes/installations for Whirlpool systems, for example, are made by third party suppliers and if holes/installations are made that are not in accordance with the installation instructions associated with the product.

For full warranty terms please visit the Argent Australia website.

1.4 Maintenance and Care

Bath surfaces are extremely easy to clean, pore-free, and seamlessly smooth. For the surfaces to retain their brilliance, all that is needed is regular treatment with a sponge and a liquid cleaning agent that is also suitable for synthetics, such as acrylic.

Limescale deposits and loss of shine are easily eliminated with vinegar-based or special limescale cleaners. Alkaline cleaning agents, such as standard washing-up liquid, can remove substances that leave greasy marks.

2 Safety

1.1 Intended Use

Antao und Theano are free-standing Quaryl® bathtubs to be used for bathing in domestic use.

Intended use also includes:

- Compliance with all the instructions in these operating/installation instructions
- Compliance with the inspection and maintenance tasks
- Exclusive use of original parts

1.2 Reasonably Predictable Misuse

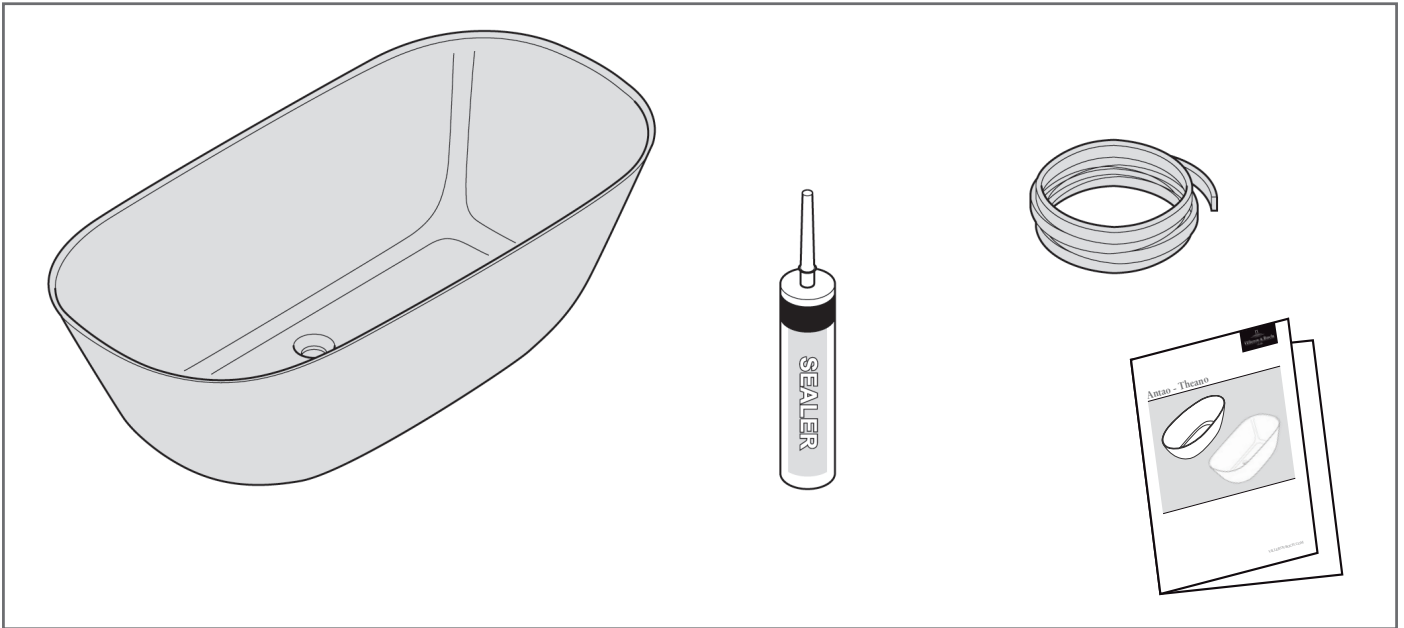
Any use other than those listed under “intended use”, or use which goes beyond this, is considered to be non-intended.

For damage arising from non-intended use, the operator himself is exclusively responsible, and the manufacturer does not accept any liability whatsoever.

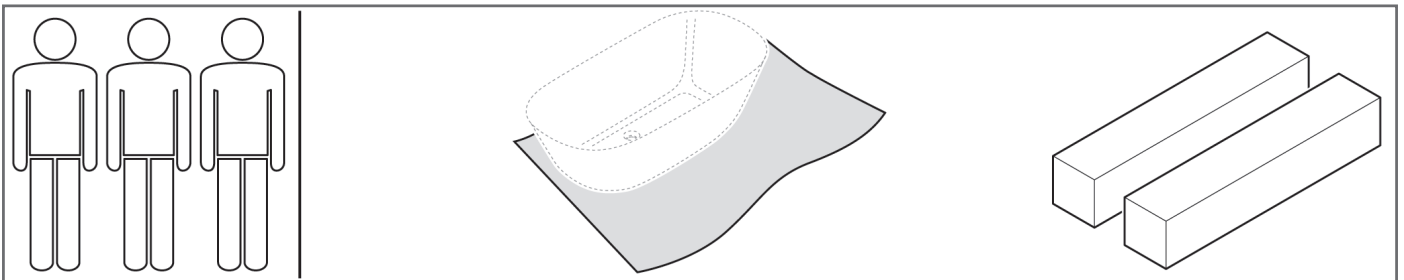
3 Scope of supply / tools required Antao/Theano

Check that delivery contents are complete on arrival.

Scope of Supply



Tools Required





REQUIRED TO INSTALL

4 Installation

As Antao and Theano have **NO** cavity beneath the bath, consideration for a cavity for waste connection **MUST** be considered for under the bath.

Below suggestions **MUST** be checked with relevant authorities for your individual circumstance in relation to your installation.

1. **Cavity below finished floor** - Confirm with relevant authorities for water proofing requirements.
i.e. Puddle drain or separate extra floor waste in cavity.
2. **Install platform on finished floor to have cavity sit higher then the finished floor** - Confirm with relevant authorities for water proofing requirements.
i.e. Puddle drain or separate extra floor waste in cavity.



Important

Never put the product near or above heat resources such as radiators, heat registers, stoves or other types of devices that produce heat.

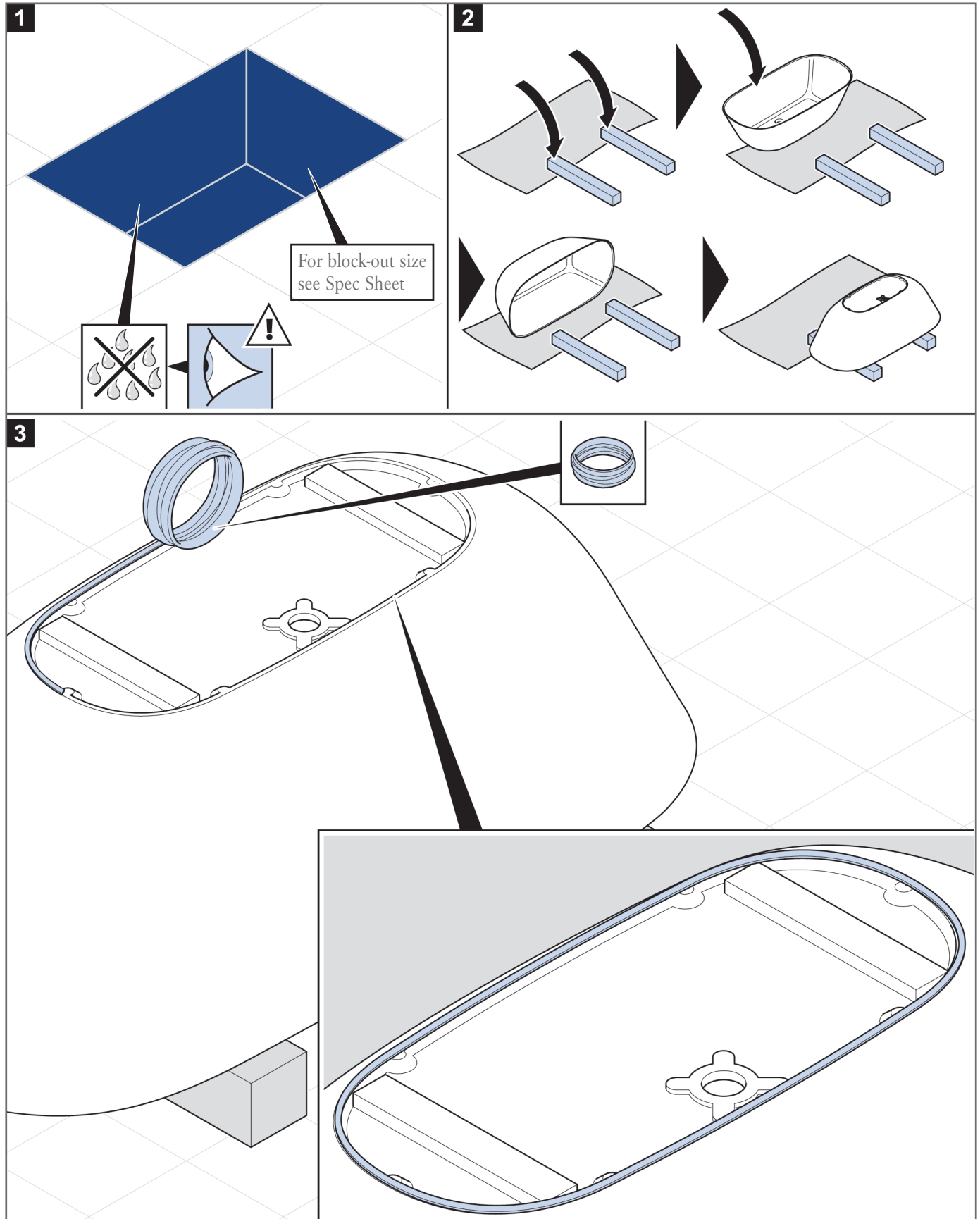
5 Operation

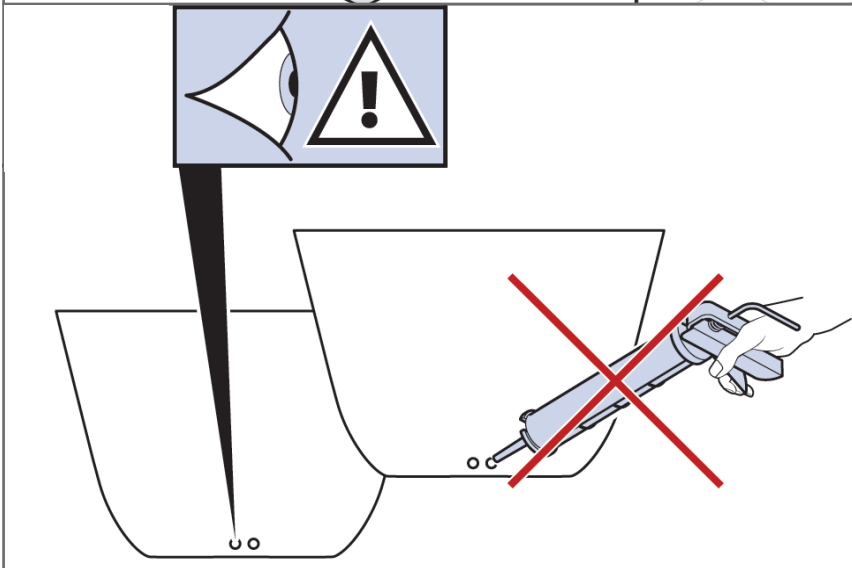
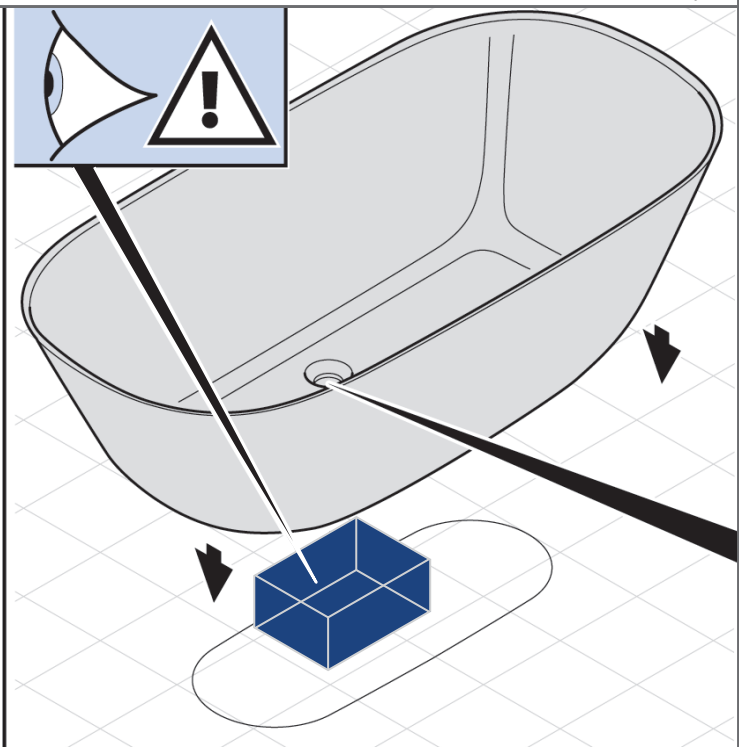
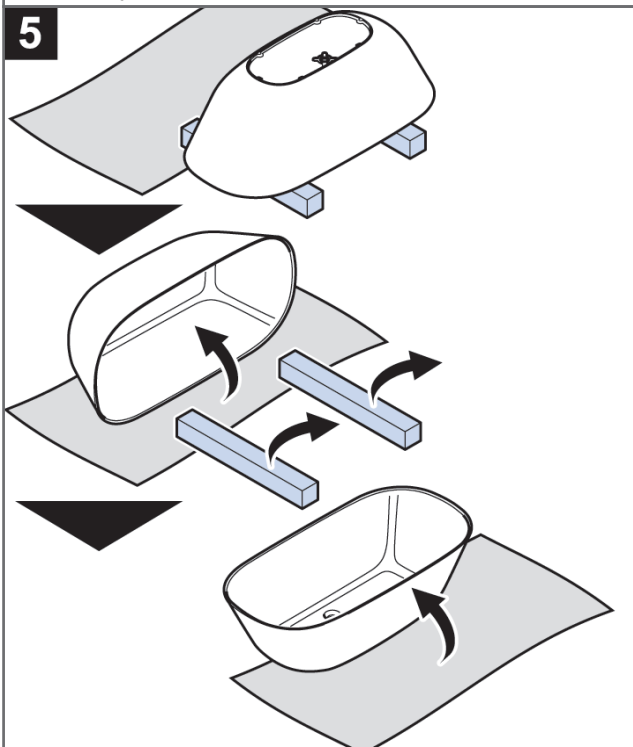
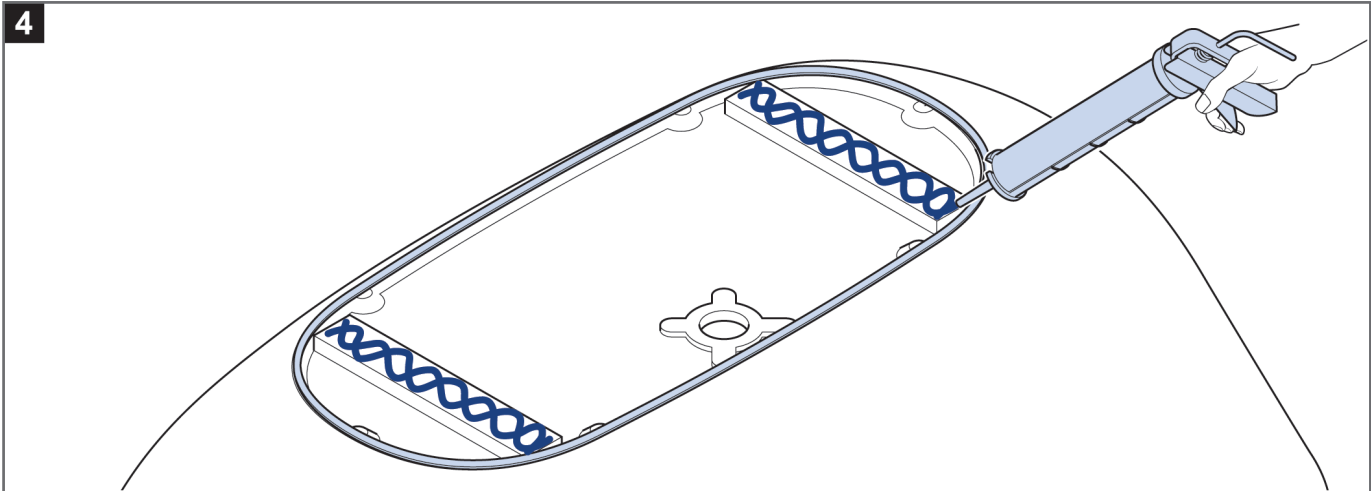


Important

Slow moving/weak elderly or disabled persons should take care when using the bathtub and must be extra careful when getting in and out.

6 Installation Antao/Theano





i

Important

Holes on the end of the bath to remain open and free.



Argent Australia
L1/22 Arthur Street, Fortitude Valley QLD 4006
1300 364 748
www.argentaust.com.au



Villeroy & Boch AG
Postfach 12 30-66689 Mettlach, Germany
Tel: +49 (0) 6864816000
www.villeroy-boch.com

Please Direct any feedback for this product to Customer Central:
support@customer-central.com.au or call 1300 364 748

The manufacturer reserves the right to make alterations without notice.
